

# Newmark Philadelphia



**Adam Rudman**  
*Assistant Vice President  
Debt*



**Angelo Brutico**  
*Associate  
Capital Markets*



**Anthony Faggiola**  
*Senior Graphic Designer  
Healthcare Capital Markets*



**Ben Appel**  
*Vice Chairman  
Healthcare Capital Markets*



**Chris Koehler**  
*Associate  
Multifamily Capital Markets*



**Craig Scheuerle**  
*Executive Managing Director  
Brokerage*



**Dave Dolan**  
*Senior Managing Director  
Capital Markets*



**David Rylander**  
*Senior Associate, Servicing  
Capital Markets*



**Donna Ficarra**  
*Senior Director of Operations  
Capital Markets*



**Elias Sulpizio**  
*Analyst  
Debt*



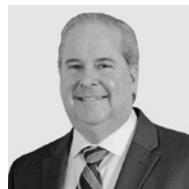
**Eric DeStefano**  
*Assistant Vice President  
Debt*



**Erin Miller**  
*Executive Managing Director  
Multifamily Capital Markets*



**Eustace Wolfington**  
*Senior Managing Director  
Industrial*



**Greg Bond**  
*Vice President  
Property Management*



**Jake Ramage, MAI**  
*Senior Vice President  
Valuation & Advisory*



**Jeanne Williams**  
*Senior Graphic Designer  
Marketing*



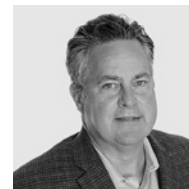
**Jeff Tertel**  
*Executive Managing Director  
Brokerage*



**Jim Badolato**  
*Executive Managing Director  
Debt*

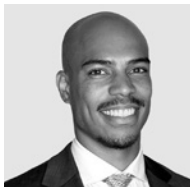


**Jim Egan**  
*Executive Managing Director  
Brokerage*



**Jim Mullarkey**  
*Executive Managing Director  
Brokerage*

# Newmark Philadelphia



**Kane Ritchie**  
*Associate  
Brokerage*



**Kayla DeJohn**  
*Senior Project Manager  
Project Management*



**Kippy Donovan**  
*Associate  
Debt*



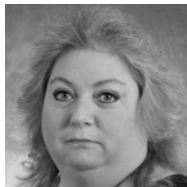
**Kim Easton**  
*AVP, Senior Business Operations Manager,  
Human Resources*



**Lauren Gilchrist**  
*Executive VP, Market Leader  
Brokerage*



**Laurie Webber**  
*Senior Administrative Assistant  
Brokerage*



**Marlene Moule**  
*Senior Administrative Assistant  
Brokerage*



**Marybeth Farris**  
*Director, Transactions  
Multifamily Capital Markets*



**Matt Guerrieri**  
*Managing Director  
Brokerage*



**Matt Cullison**  
*Executive Managing Director  
Debt*



**Max Keyser**  
*Senior Appraiser  
Valuation & Advisory*



**Michael Silverman**  
*Senior Managing Director, Co-Market Leader  
Valuation & Advisory*



**Mike Dolan**  
*Senior Managing Director  
Brokerage*



**Mike McKee**  
*Managing Director  
Debt*



**Neil Brazitis**  
*Senior Managing Director  
Brokerage*



**Paul McNamara**  
*Valuation Associate  
Valuation & Advisory*



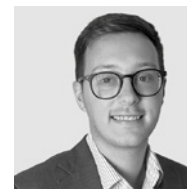
**Robert O'Brien**  
*Vice President  
Valuation & Advisory*



**Ron Ott**  
*Associate Director  
Healthcare Capital Markets*



**Rory Daniel**  
*Senior Appraiser  
Valuation & Advisory*



**Sean McClellan**  
*Senior GIS Analyst  
Research*

# Newmark Philadelphia



**Sid Smith**  
*Executive Managing Director  
Brokerage*



**Steve Comly**  
*Executive Managing Director  
Brokerage*



**Steve Milliken**  
*Managing Director  
Project Management*



**Tom Nguyen**  
*Associate, Servicing  
Capital Markets*



**William MacAdams**  
*Senior Graphic Designer  
Marketing*

# Newmark King of Prussia



**Brett Grifo**  
*Executive Managing Director  
Capital Markets*



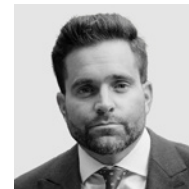
**Cade Rooney**  
*Financial Analyst  
Capital Markets*



**Carol Driver**  
*Associate Vice President  
Property Management*



**Charles McGrath**  
*Executive Managing Director  
Capital Markets*



**Chris Lange**  
*Executive Managing Director  
Brokerage*



**Diane Van Schalkwyk**  
*Administrative Manager  
Brokerage*



**Duke Kennedy**  
*Managing Director  
Brokerage*



**Ellen Rohlfing**  
*Associate  
Brokerage*



**Jim Belcher**  
*Executive Managing Director  
Industrial Brokerage*



**Jeff Mack**  
*Executive Managing Director  
Brokerage*



**Jim Dugan**  
*Executive Managing Director  
Brokerage*



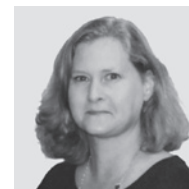
**Jim Wilson**  
*Managing Director  
Brokerage*



**June Birkbeck**  
*Senior Administrative Assistant  
Brokerage*



**Justin Bell**  
*Senior Managing Director  
Brokerage*



**Kathy Renn**  
*Senior Administrative Assistant  
Brokerage*



**Marlene Sahms**  
*Director  
Marketing*



**Mike O'Neill**  
*Associate  
Brokerage*



**Michael Spaeder**  
*Associate  
Brokerage*



**Nick Pickard**  
*Associate Director  
Industrial Brokerage*



**Patrick Nowlan**  
*Senior Managing Director  
Brokerage*

# Newmark King of Prussia



**Ryan Guittare**  
*Managing Director*  
*Industrial Capital Markets*



**Reid Blynn**  
*Executive Managing Director*  
*Brokerage*



**Sean Donnelly**  
*Associate*  
*Brokerage*



**Steve Cook**  
*Associate Director*  
*Industrial Brokerage*



**Tim Brogan**  
*Senior Managing Director*  
*Brokerage*



**Zac Ambielli**  
*Associate*  
*Brokerage*

## Newmark Marlton



**Anne Klein**  
*Executive Managing Director  
Brokerage*



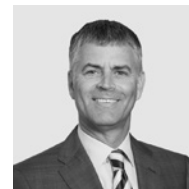
**Beau Cantera, MAI**  
*First Vice President  
Valuation & Advisory*



**Caroline Hoffman**  
*Operations & Transaction Manager  
Healthcare Capital Markets*



**Connor Montagano**  
*Senior Managing Director  
Brokerage*



**Kurt Montagano**  
*Senior Managing Director  
Brokerage*

## Newmark Wilmington



**Brett DiClemente**  
*Associate Director  
Brokerage*



**Neal Dangelo**  
*Senior Managing Director  
Brokerage*



**Tighe Watson**  
*Associate  
Brokerage*



**Wills Elliman**  
*Senior Managing Director  
Brokerage*

# Newmark Property Management



**Allison Desmond**  
*Property Manager*



**Andrea Sankaran**  
*Property Manager*



**Andrew Rodenbaugh**  
*Property Assistant*



**Becky Stillman**  
*National Portfolio Manager*



**Beverly Bouvier**  
*Assistant Property Manager*



**Brandon Wynne**  
*Building Engineer*



**Carol Driver**  
*Vice President*



**Chris Mullarkey**  
*Building Engineer*



**Cindy Schiro**  
*Portfolio Manager*



**Daniel Pignuolo**  
*Building Engineer*



**Dawud Pray**  
*Building Engineer*



**Diane Staszewski**  
*Property Assistant*



**Elmer Christian**  
*Building Engineer*



**Emily Phipps**  
*Property Assistant*



**Greg Bond**  
*Senior Vice President*



**Janine Jones**  
*Assistant Property Manager*



**Joe Oberholtzer**  
*Chief Engineer*



**Juan Bacilio**  
*Building Engineer*



**Kristen Behr**  
*Property Assistant*



**Larissa Carreon**  
*Property Manager*



# Newmark Property Management Roster



**Marianne Jones**  
*Assistant Property Manager*



**Michael Brown**  
*Building Engineer*



**Michael Fenza**  
*Property Manager*



**Michelle McCullough**  
*Property Manager*



**Richard Hollingsworth**  
*Building Engineer*



**Rita Schilk**  
*Assistant Property Manager*



**Ryan Henry**  
*Senior Property Manager*



**Sheree Johnson**  
*Financial Analyst*



**Terri Cipollone**  
*Property Manager*



**Tim Dippold**  
*Building Engineer*



**Tim Herb**  
*Senior Property Manager*



**Travis Rodgers**  
*Building Engineer*



**Tye Richmond**  
*Porter*



**Whitney Casella**  
*General Manager*



**Will Butler**  
*Building Engineer*